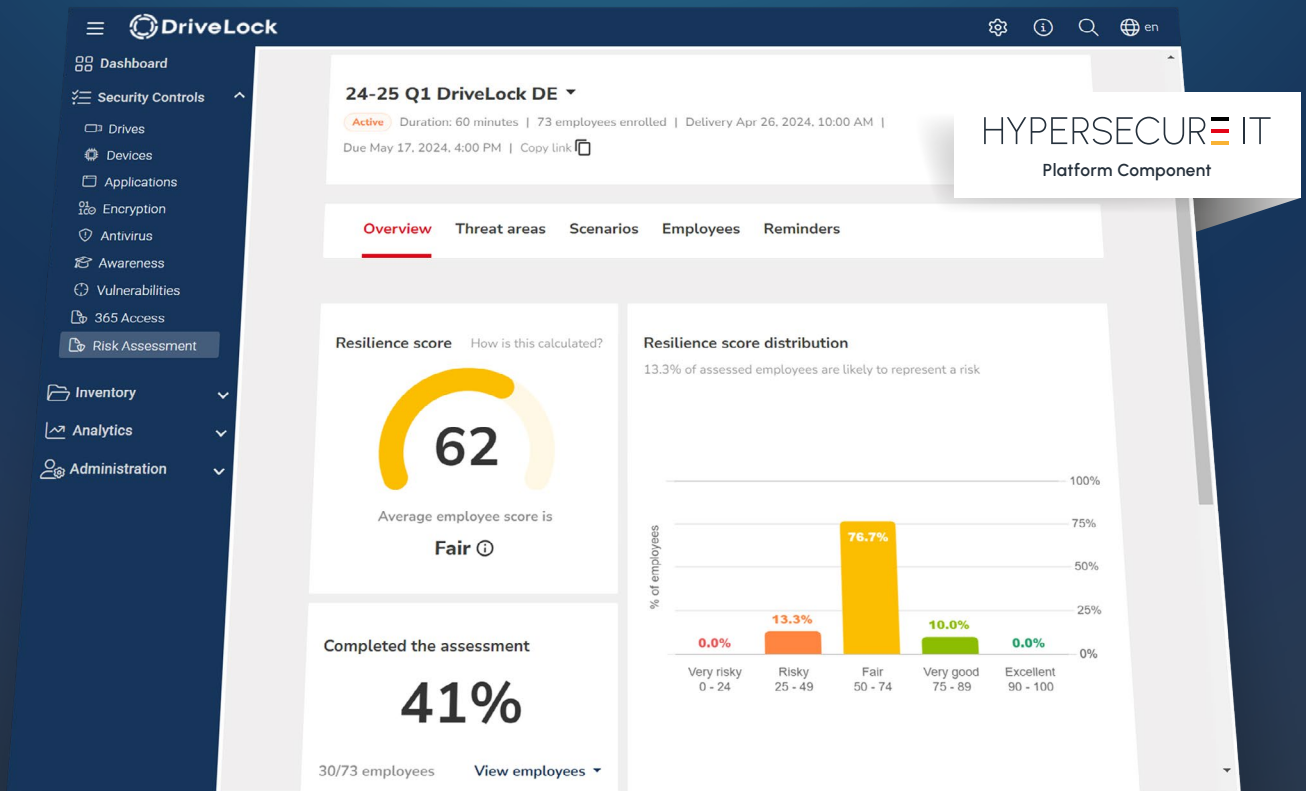




HUMAN RISK & AWARENESS

Eliminate the top cyber threat affecting your data!
Transparent and sustainable



TEST TODAY – BE HYPERSECURE TOMORROW

It's simple and quick - just test your own security awareness and information security skills. Then also test that of your colleagues..



HUMAN RISK & AWARENESS



Mitigate employee-related cyber threats fast and targeted

YOUR CHALLENGES

You need reports to comply with GDPR, PCI, HIPAA, SOX, ISO 27001/2, FISMA, CCPA, NERC and other major security controls like NIST, NIS2, CIS and SANS.

You want to proactively train your employees to identify potential risks promptly and improve their risk awareness and behavior.

Your organisation needs a solution that saves time and resources through automation, provides security leaders with an overview and helps them select targeted training for employees.

You want to increase engagement in security campaigns by providing enjoyable and relatable content that doesn't waste employees' time and stays in their minds for a long time.

OUR SOLUTION

New methods for measuring the effectiveness of cybersecurity training and automated training programmes based on a detailed risk analysis.

Targeted phishing scenarios based on the human risk assessment provide security leaders with more detailed insights than a pure click analysis.

Real-time monitoring of training programmes, attendance and results as well as comprehensive reports that can be taken into meetings or used to track progress.

A positive risk analysis, with a phishing simulation component and versatile scenarios that don't set employees up to fail.

YOUR BENEFITS

- 1 Targeted identification of vulnerable departments, roles, teams, and individuals.
- 2 Efficient prevention of cyber threats due to misconduct.
- 3 Simple measurement of the effectiveness of security training and awareness programs.
- 4 Scientific methodology for risk-based behavioral analysis Easy integration.
- 5 Easy integration into existing human resource management systems.